



**MEMORANDUM**

To: Board of Directors, Executive Committee, Joint Operations Committee and DCC Staff  
 From: Executive Director Tom Folie  
 Date: 2/14/2019  
 Subject: Dakota Communications Center Monthly Statistics - January 2019

The DCC reviews monthly activity and performance based on measurements approved by the Board of Directors. Activities measured are call pickup, call processing and emergency medical dispatch (EMD).

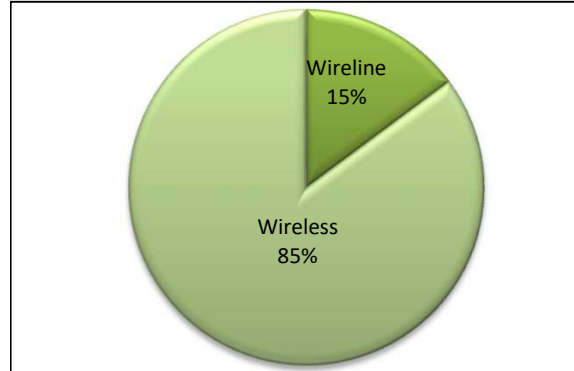
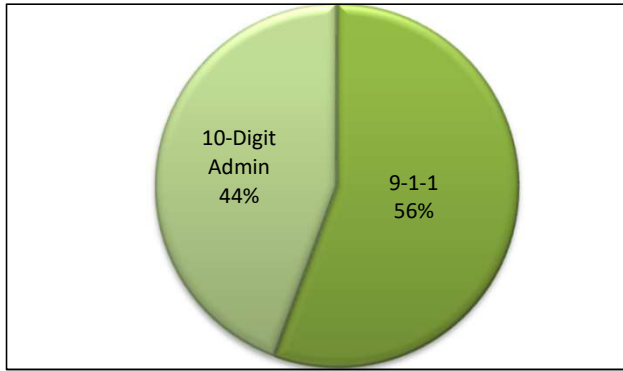
- There were 24,204 calls received and 27,900 CAD events.
- Call pickup times were met with 83% answered within 7 seconds, 94% within 10 seconds and 100% of calls answered within 20 seconds.
- NFPA Standard for fire call processing: 93% of Structure Fire calls were processed within 64 seconds and 100% within 106 seconds.  
 "All Other Fire Calls" were processed with 74% within 64 seconds and 93% within 106 seconds.
- Priority Law call processing times met standard with an average creation time of less than 55 seconds.
- EMD Total compliance standards were met for November. Case entry was 95.88%.  
 Total compliance was 97.76%.

Below is an overview of DCC performance.

	<b>Comparisons</b>	
	<u>2018</u>	<u>2019</u>
Fire/EMS CAD Events	2,368	2,413
Law Enforcement CAD Events	25,341	25,487
911 Calls	14,164	13,457
	<b>YTD</b>	<b>YTD</b>
	<u>2018</u>	<u>2019</u>
Fire/EMS CAD Events	2,368	2,413
Law Enforcement CAD Events	25,341	25,487
911 Calls	14,164	13,457

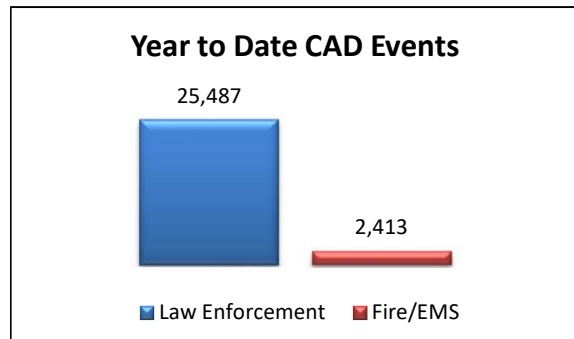
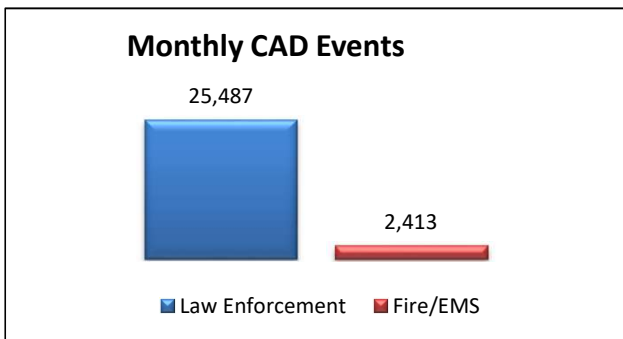
### Incoming Calls

	Total Calls	Wireline	Wireless
9-1-1	13,457	1,997	11,460
10-Digit Admin	10,747		
<b>TOTAL</b>	<u>24,204</u>		



### CAD Events\*

	Law Enforcement	Fire/EMS	Total
Month	25,487	2,413	27,900
Year to Date	25,487	2,413	27,900
Year to Date % of Calls	91%	9%	

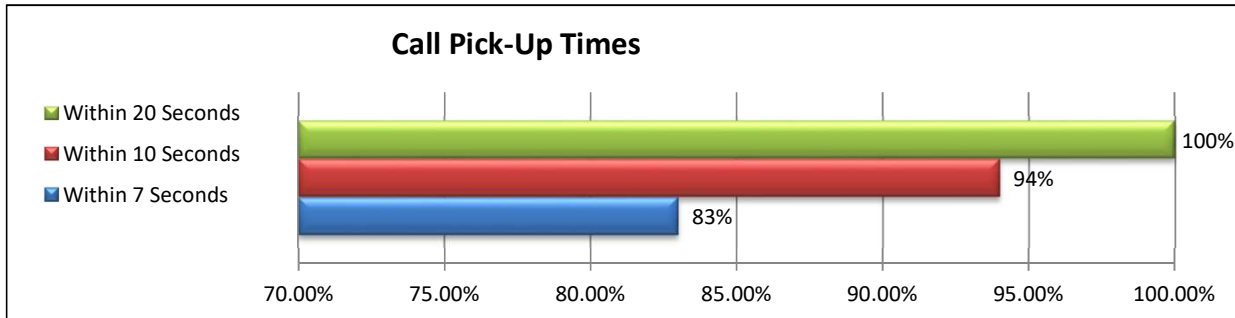


\* Individual agency CAD events are listed at the end of this report.

## 9-1-1 Call Pick-Up Performance

This performance standard is based on the nationally recognized National Emergency Number Association (NENA) standard of 90% of incoming calls answered within 10 seconds and 95% of incoming calls answered within 20 seconds.

DCC Standard:           80% of incoming calls answered within 7 seconds  
                              90% of incoming calls answered within 10 seconds  
                              95% of incoming calls answered within 20 seconds



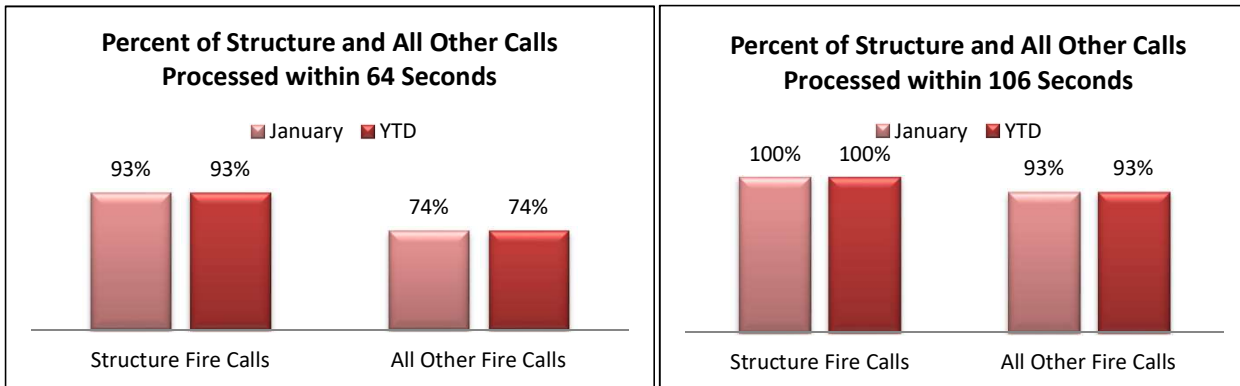
## Fire Call Processing Times

Fire call processing times are measured from the time the telephone rings through completion of the initial dispatch, often referred to as "ring to ding". DCC standards are taken from the NFPA standard 1221.

NFPA Standard for Structure and All Other:

90% of calls processed within 64 seconds

95% of calls processed within 106 seconds

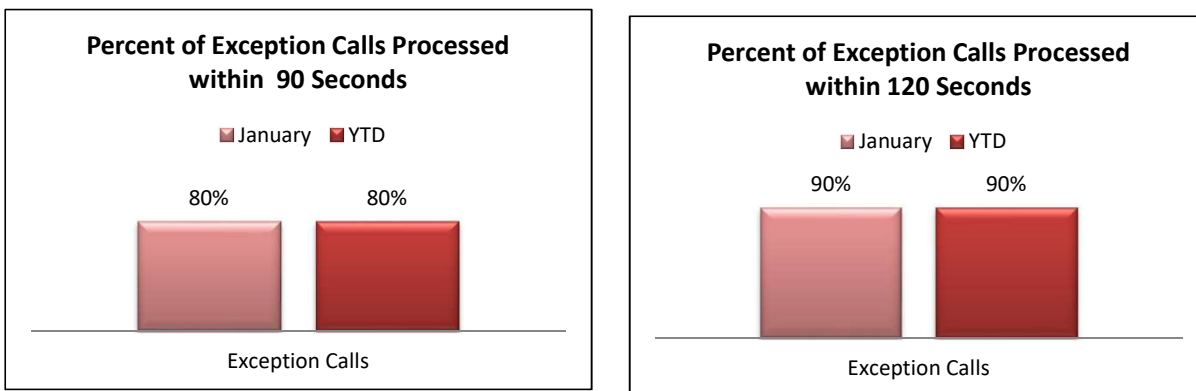


Average processing time for non-exception structure fires was 46 seconds. Average processing time for all other fire calls was 52 seconds.

NFPA Standard for PI Accidents with Confirmed Entrapment and Exception Calls:

90% of calls processed within 90 seconds

99% of calls processed within 120 seconds

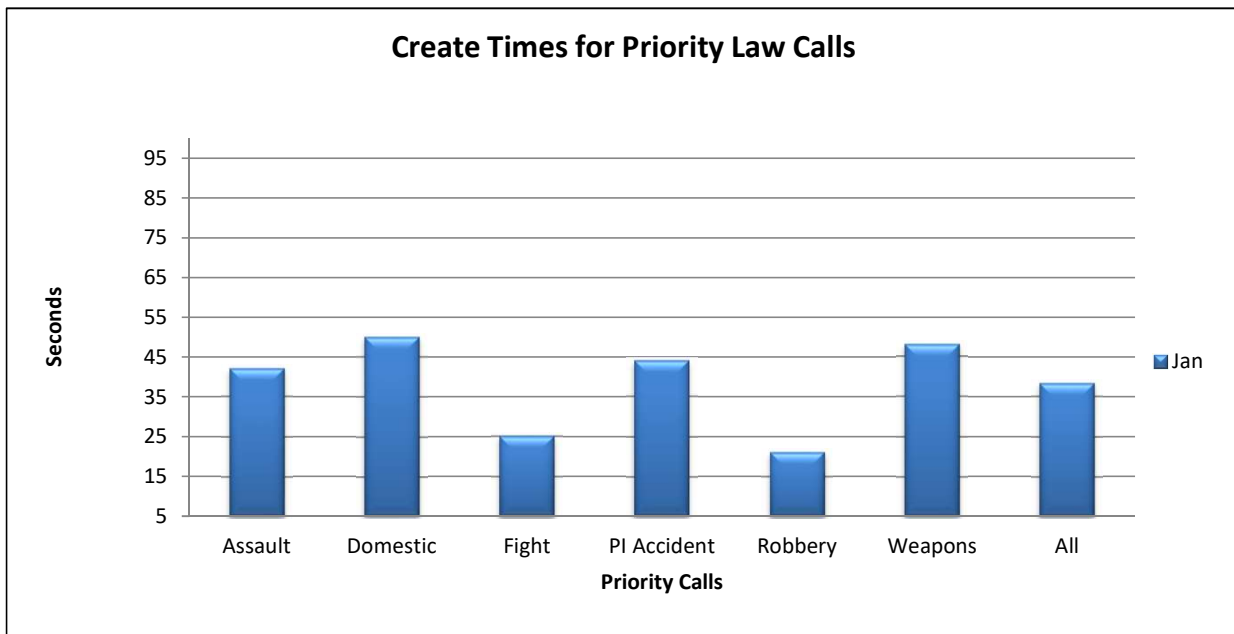
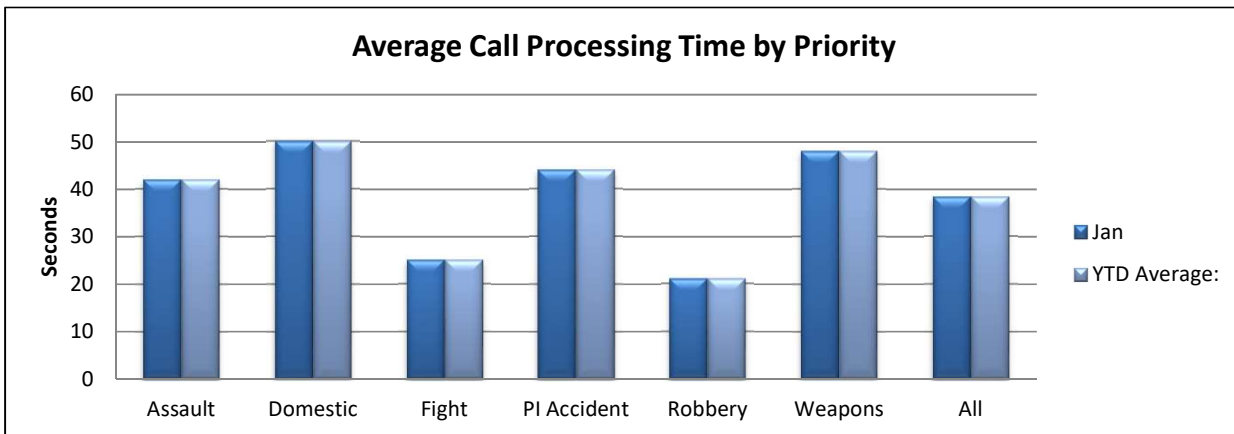


Exception Calls include HAZMAT, Water or Ice Rescue, EMD #22, when there is the need for TTY, use of Language Line or where there are difficulties determining a location. (Any call included in the exception category due to location difficulty has been reviewed.)

## Law Enforcement Call Processing Times

As there is not currently a designated national standard, the Law Enforcement Operations Committee has designated a standard that identifies certain priority one call types that should be created within 55 seconds on average. The dispatching of priority one calls varies based on individual agency protocol so it is not considered in the standard.

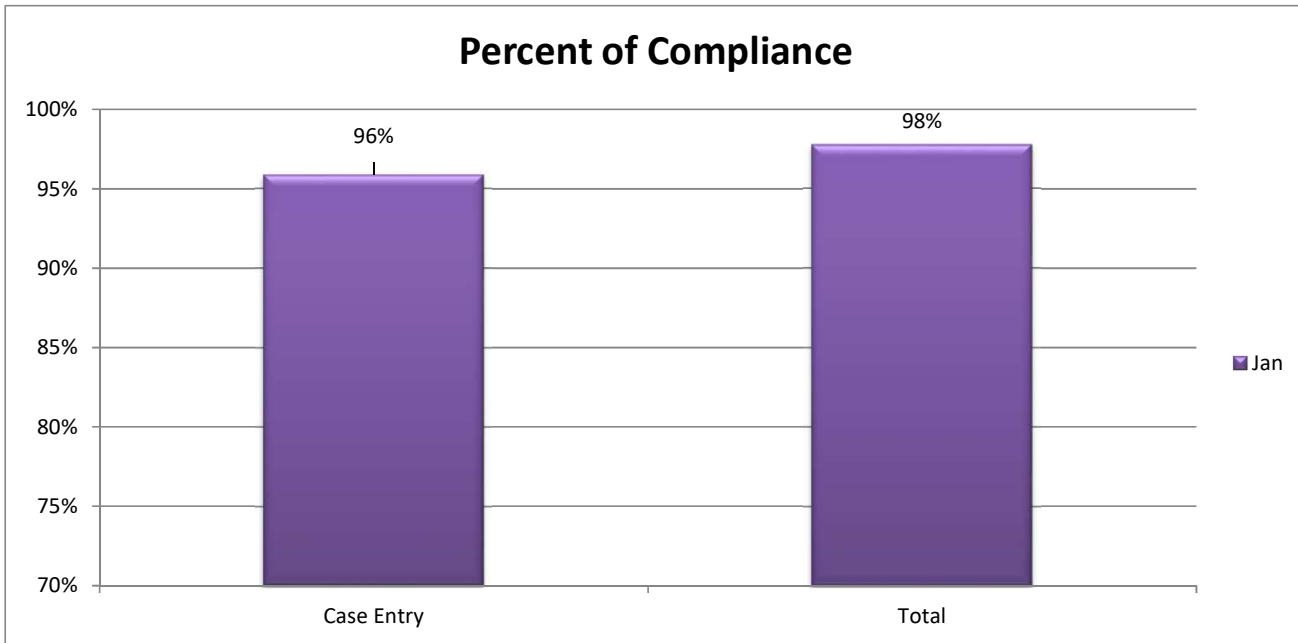
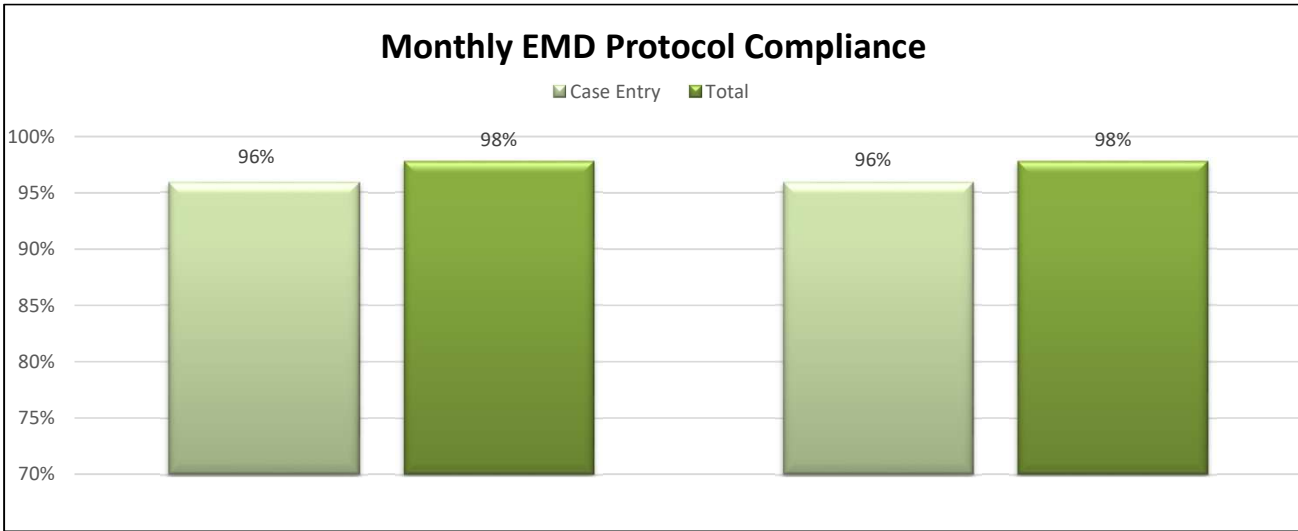
DCC Standard:           Average total creation time of 55 seconds or less for the following incident types  
                           Assaults                   Fights                                   Robberies  
                           Domestics                Personal Injury Accidents        Weapons



## Emergency Medical Dispatching

Emergency Medical Dispatching is a call processing protocol used to determine the severity of medical emergencies. The EMD protocol determines level of response by local providers while enabling the dispatcher to offer pre-arrival instructions to the victim. The performance standard is based upon Priority Dispatch Quality Assurance (Pro-QA) guidelines.

DCC Standard:        95% Case Entry Compliance  
                              90% Total Compliance





	Jan	Feb	March	April	May	June	July	August	Sept	Oct	Nov	Dec	Totals
<b>Mendota Heights (Includes Mendota and Lilydale)</b>	<b>*12,367</b>												
Law Enforcement	809												809
Fire EMS	26												26
<b>Miesville Fire</b>													
Fire EMS	2												2
<b>Randolph-Hampton Fire</b>													
Fire EMS	14												14
<b>Rosemount</b>	<b>*22,559</b>												
Law Enforcement	1,072												1,072
Fire EMS	72												72
<b>South St. Paul</b>	<b>*20,407</b>												
Law Enforcement	1,608												1,608
Fire EMS	221												221
<b>West St. Paul (Includes Sunfish Lake)</b>	<b>*21,409</b>												
Law Enforcement	1,629												1,629
Fire EMS	323												323
Law Enforcement Total	25,487	-	-	-	-	-	-	-	-	-	-	-	25,487
Fire EMS Total	2,413	-	-	-	-	-	-	-	-	-	-	-	2,413

\*Population per Census Bureau, based on Metro Council website information ([www.metrocouncil.org](http://www.metrocouncil.org)).

\* Dakota County Population reflects service area for Sheriff's patrol function.

Population counts based on 2016 data



# Fire/EMS

## Dispositions

<u>Nature of Concern</u>	<u>Monthly Total</u>	<u>Coaching Training</u>	<u>Unfounded</u>	<u>Exonerated</u>	<u>Discipline</u>	<u>Other</u>	<u>Technology</u>
Assignment	0						
Coding	0						
Incorrect Information	1	1					
Policy/Procedure	0						
Professional Conduct	0						
Timeliness	11		1	9			1
Questions	0						
Other	0						
<b>Total:</b>	<b>12</b>						
<b>Compliments</b>	<b>0</b>						

### Definitions:

<b>Assignment:</b>	Did the DCC fail to send the correct resources?
<b>Coding:</b>	Did the DCC fail to code the event correctly?
<b>Incorrect Information:</b>	Did the DCC fail to provide correct information or provide incorrect information?
<b>Policy Failure:</b>	Issue or concern based upon established DCC policy or procedure. Does the policy serve the DCC and agency needs?
<b>Timeliness:</b>	Did the DCC fail to process an incident or provide information in a timely manner?
<b>Questions:</b>	A question from the public or an agency relating to the policies or procedures of the DCC.
<b>Compliment:</b>	Communications from an external source complimenting the DCC on service provided.

### Dispositions:

<b>Coaching/Training:</b>	The issue was handled in the supervisory subordinate relationship as coaching or training.
<b>Unfounded:</b>	The action leading to the concern or allegation did not occur.
<b>Exonerated:</b>	The action leading to the concern or allegation did occur, but was found to be proper performance.
<b>Discipline:</b>	A formal personnel action was taken in response to the concern or allegation.
<b>Other:</b>	Insufficient information available to establish facts of issue.
<b>Technology:</b>	The action leading to the inquiry did occur, but was found to be due to a technology complication.

# DCC Service Issues-Fire/EMS-2019

<u>Nature of Concern</u>	<u>Jan</u>	<u>Feb</u>	<u>Mar</u>	<u>Apr</u>	<u>May</u>	<u>June</u>	<u>July</u>	<u>Aug</u>	<u>Sep</u>	<u>Oct</u>	<u>Nov</u>	<u>Dec</u>	<u>Total</u>
Assignment	0												0
Coding	0												0
Incorrect Information	1												1
Policy/procedure	0												0
Professional Conduct	0												0
Timeliness	11												11
Questions	0												0
Other	0												0
<b>Total:</b>	<b>12</b>	<b>0</b>	<b>0</b>	<b>0</b>	<b>0</b>	<b>0</b>	<b>0</b>	<b>0</b>	<b>0</b>	<b>0</b>	<b>0</b>	<b>0</b>	<b>12</b>
Compliments	0												0

<u>Disposition</u>	<u>0</u>	<u>C/T</u>	<u>U</u>	<u>E</u>	<u>D</u>	<u>Q</u>	<u>I</u>
Assignment	0						
Coding	0						
Incorrect Information	1	1					
Policy/procedure	0						
Professional Conduct	0						
Timeliness	11		1	9			1
Questions	0						
Other	0						
<b>Total:</b>	<b>12</b>	<b>1</b>	<b>1</b>	<b>9</b>	<b>0</b>	<b>0</b>	<b>1</b>

## Definitions:

- Assignment:** Did the DCC fail to send correct resources?
- Coding:** Did the DCC fail to code the event correctly?
- Incorrect Information:** Did the DCC fail to provide correct information or provide incorrect information?
- Policy Failure:** Issue or concern based upon established DCC policy or procedure. Does the policy serve the D
- Timeliness:** Did the DCC fail to process an incident or provide information in a timely manner?
- Questions:** A question from the public or an agency relating to the policies or procedures of the DCC.
- Compliment:** Communications from an external source complimenting the DCC on service provided.

## Dispositions:

- Coaching/Training:** The issue was handled in the supervisory subordinate relationship as coaching or training.
- Unfounded:** The action leading to the concern or allegation did not occur.
- Exonerated:** The action leading to the concern or allegation did occur, but was found to be proper performance.
- Discipline:** A formal personnel action was taken in response to the concern or allegation.
- Other:** Insufficient information available to establish facts of issue.
- Technology:** The action leading to the inquiry did occur, but was found to be due to a technology complication.

# Law Enforcement

## Dispositions

<u>Nature of Concern</u>	<u>Monthly Total</u>	<u>Coaching Training</u>	<u>Unfounded</u>	<u>Exonerated</u>	<u>Discipline</u>	<u>Other</u>	<u>Technology</u>
Assignment	0						
Coding	0						
Incorrect Information	2	1	1				
Policy/Procedure	2	2					
Professional Conduct	0						
Timeliness	0						
Questions	0						
Other	0						
<b>Total:</b>	<b>4</b>						
<b>Compliments</b>	<b>2</b>						

### Definitions:

<b>Assignment:</b>	Did the DCC fail to send the correct resources?
<b>Coding:</b>	Did the DCC fail to code the event correctly?
<b>Policy Failure:</b>	Issue or concern based upon established DCC policy or procedure. Does the policy serve the DCC and agency needs?
<b>Incorrect Information:</b>	Did the DCC fail to provide correct information or provide incorrect information?
<b>Timeliness:</b>	Did the DCC fail to process an incident or provide information in a timely manner?
<b>Questions:</b>	A question from the public or an agency relating to the policies or procedures of the DCC.
<b>Compliment:</b>	Communications from an external source complimenting the DCC on service provided.

### Dispositions:

<b>Coaching/Training:</b>	The issue was handled in the supervisory subordinate relationship as coaching or training.
<b>Unfounded:</b>	The action leading to the concern or allegation did not occur.
<b>Exonerated:</b>	The action leading to the concern or allegation did occur, but was found to be proper performance.
<b>Discipline:</b>	A formal personnel action was taken in response to the concern or allegation.
<b>Other:</b>	Insufficient information available to establish facts of issue.
<b>Technology:</b>	The action leading to the inquiry did occur, but was found to be due to a technology complication.

# DCC Service Issues-Law Enforcement-2019

<u>Nature of Concern</u>	<u>Jan</u>	<u>Feb</u>	<u>Mar</u>	<u>Apr</u>	<u>May</u>	<u>June</u>	<u>July</u>	<u>Aug</u>	<u>Sep</u>	<u>Oct</u>	<u>Nov</u>	<u>Dec</u>	<u>Total</u>
Assignment	0												0
Coding	0												0
Incorrect Information	2												2
Policy/Procedure	2												2
Professional Conduct	0												0
Timeliness	0												0
Questions	0												0
Other	0												0
<b>Total:</b>	<b>4</b>	<b>0</b>	<b>0</b>	<b>0</b>	<b>0</b>	<b>0</b>	<b>0</b>	<b>0</b>	<b>0</b>	<b>0</b>	<b>0</b>	<b>0</b>	<b>4</b>
Compliments	2												

<u>Disposition</u>	<u>0</u>	<u>C/T</u>	<u>U</u>	<u>E</u>	<u>D</u>	<u>O</u>	<u>I</u>
Assignment	0						
Coding	0						
Incorrect Information	2	1	1				
Policy/procedure	2	2					
Professional Conduct	0						
Timeliness	0						
Questions	0						
Other	0						
<b>Total:</b>	<b>4</b>	<b>3</b>	<b>1</b>	<b>0</b>	<b>0</b>	<b>0</b>	<b>0</b>

## Definitions:

- Assignment:** Did the DCC fail to send the correct resources?
- Coding:** Did the DCC fail to code the event correctly?
- Incorrect Information:** Did the DCC fail to provide correct information or provide incorrect information?
- Policy Failure:** Issue or concern based upon established DCC policy or procedure. Does the policy serve the DCC and agency needs?
- Timeliness:** Did the DCC fail to process an incident or provide information in a timely manner?
- Questions:** A question from the public or an agency relating to the policies or procedures of the DCC.
- Compliment:** Communications from an external source complimenting the DCC on service provided.

## Dispositions:

- Coaching/Training:** The issue was handled in the supervisory subordinate relationship as coaching or training.
- Unfounded:** The action leading to the concern or allegation did not occur.
- Exonerated:** The action leading to the concern or allegation did occur, but was found to be proper performance.
- Discipline:** A formal personnel action was taken in response to the concern or allegation.
- Other:** Insufficient information available to establish facts of issue.
- Technology:** The action leading to the inquiry did occur, but was found to be due to a technology complication.